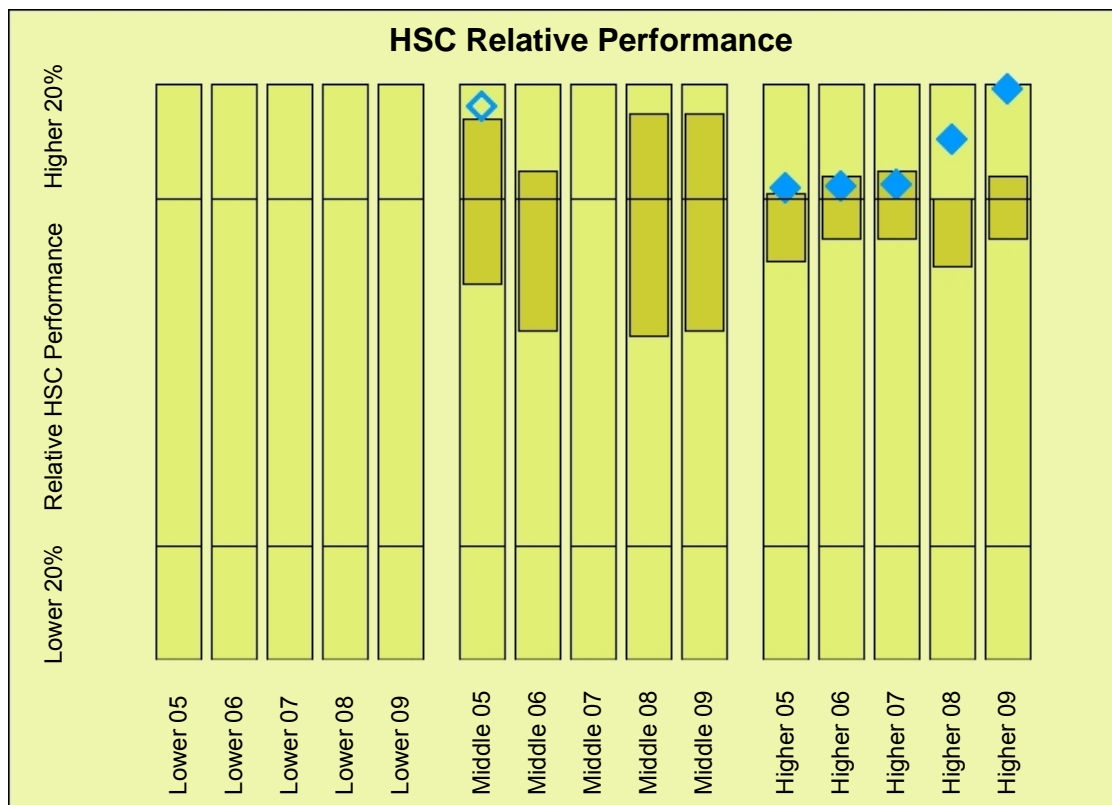
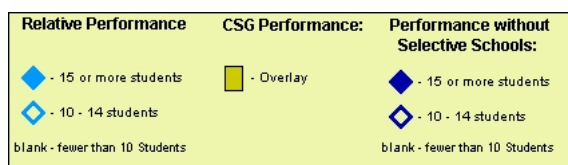


Sydney Boys High School - Higher School Certificate, 2009



Groupings Based On Previous SC Performance



Notes:

- A solid diamond indicates that there were 15 or more students in this category.
- An open diamond indicates that there were between 10 and 14 students in this category.
- A missing diamond indicates there were fewer than 10 students in this category.

Relative Performance:

Students in Year 12 in NSW public schools have been grouped into lower performing students (SC band 1, 2 and 3 students), middle performing students (SC band 4 students) and higher performing students (SC band 5 and 6 students), based on their previous performance in the School Certificate external tests where matching results were available.

The graph compares the overall performance of each of these groups within your school with the corresponding state group.

The comparisons made in this graph assume that, even if they attended a different school in the earlier years of secondary schooling, students have spent a substantial period of their senior studies at your school before sitting the Higher School Certificate. This assumption needs to be considered when interpreting the results.

The school should also consider the School Certificate external test relative performance graphs to examine overall student progress from Year 5 to Year 12.

Value Added Chart Values

Year	Data Type	Lower	No. Students	Middle	No. Students	Higher	No. Students
2009	School rank	-	1	-	9	99.0	236
2009	CSG	N/A	N/A	57 - 95	55	73 - 84	2477
2009	Non-selective rank	N/A	N/A	-	9	0.0	236
2008	School rank	-	0	-	6	90.3	249
2008	CSG	N/A	N/A	56 - 95	43	68 - 80	2526
2008	Non-selective rank	N/A	N/A	-	6	0.0	249
2007	School rank	-	0	-	7	82.6	253
2007	CSG	N/A	N/A	N/A	N/A	73 - 85	2559
2007	Non-selective rank	N/A	N/A	-	7	0.0	253
2006	School rank	-	0	-	8	82.2	250
2006	CSG	N/A	N/A	57 - 85	66	73 - 84	2505
2006	Non-selective rank	N/A	N/A	-	8	0.0	250
2005	School rank	-	0	96.0	14	81.9	231
2005	CSG	N/A	N/A	65 - 94	75	69 - 81	2514
2005	Non-selective rank	N/A	N/A	0.0	14	0.0	231